

THE GLOBAL  
WOMEN IN  
LIGHTING  
  
GATHERING

8TH MARCH  
2021  
INTERNATIONAL WOMENS DAY

LIGHT  
COLLECTIVE

formalighting

ARCHI  
*fos*

# Contents

01.

HOW TO HOP-IN TO THE  
#WILGLOBALGATHERING

04 - 11

02.

WOMEN IN LIGHTING  
INFO BOOTH

12 - 13

03.

SOCIAL ROULETTE

14 - 15

04.

IWD CALL TO ACTION

16 - 17

05.

EVENT CO-SPONSORS

18 - 29

06.

EVENT PROGRAM

30 - 35

## WELCOME

We would like to welcome you all to the first WIL Global Gathering.

It's a great opportunity to celebrate both International Women's Day and the second year of the Women In Lighting Project. We will also be launching the new WIL Awards as part of the event.

The second year of WIL has not been what we imagined and whilst we are sad that we have not been able to meet any of you in person, we are grateful and amazed that the WIL community has been so engaged and supportive of one another.

This was reflected in the WIL in Lockdown sharing and also by your participation in the WIL T-shirt competition in 2020.

We hope that this event goes toward inspiring and connecting our growing network and community together. The event features a selection of sessions themed as follows: Inspiration, Project, Action and Social. It is divided into three parts to ensure that we are able to include presentations from around the world and enable participation from different time zones, ensuring our event is truly global.

We hope that you can join us for part of the day or all day if you can and that you enjoy being part of our Global Gathering.

The WIL Team

LIGHT  
COLLECTIVE

formalighting

ARCHI  
fos

FÖS  
lighting

CASAMBI


ALPHABET BRUCK  
LEPZ brands

Huda  
Lighting



# HOW TO HOP-IN TO THE #WILGLOBALGATHERING

## Sign-in



**Women in Lighting - Global Gathering**  
Hosted by Women in Lighting

You're almost registered for this event, please login or signup for a Hopin account to attend.

First name (required)

Last name (required)

Email address (required)

Password (required)



## Your WIL Profile



We highly recommend you take the time to set up your WIL PROFILE.

Click [here](#) to create it.

### Profile

Fill your profile so people can know more about you during events.

Avatar

First name  Last name

Headline

Bio

Email

Social profiles

Twitter

LinkedIn

Website

**Choose Image**  
A photo puts a face to a name

**Your Bio**  
A headline or mini-bio will make that first impression that draws us in to learn more.

**Your Social Profiles**  
Make it easier for members of the WIL community to contact you



# EVENT RECEPTION AREA

## #WILGLOBALGATHERING

The image shows a screenshot of a web application interface for the Women in Lighting Global Gathering event. On the left is a navigation menu with icons for Reception (highlighted with a red box), Stage, Sessions, Networking, and Expo. The main content area features a banner with the event title and regional schedules: ASIA & THE PACIFIC (06:00-09:00 GMT), EUROPE, MIDDLE EAST & AFRICA (12:00-15:00 GMT), and THE AMERICAS (16:00-19:00 GMT). Below the banner, the event is titled "Women in Lighting - Global Gathering" and is hosted by Women in Lighting. The "Description" section includes a welcome message, browser recommendations (Chrome or Firefox), and instructions on how to participate in the chat and use the mobile app. To the right, a tweet from @womeninlighting is displayed, featuring the event banner and text about the gathering on International Women's Day. The tweet includes a retweet from @the\_ilp and another from @SLL100.

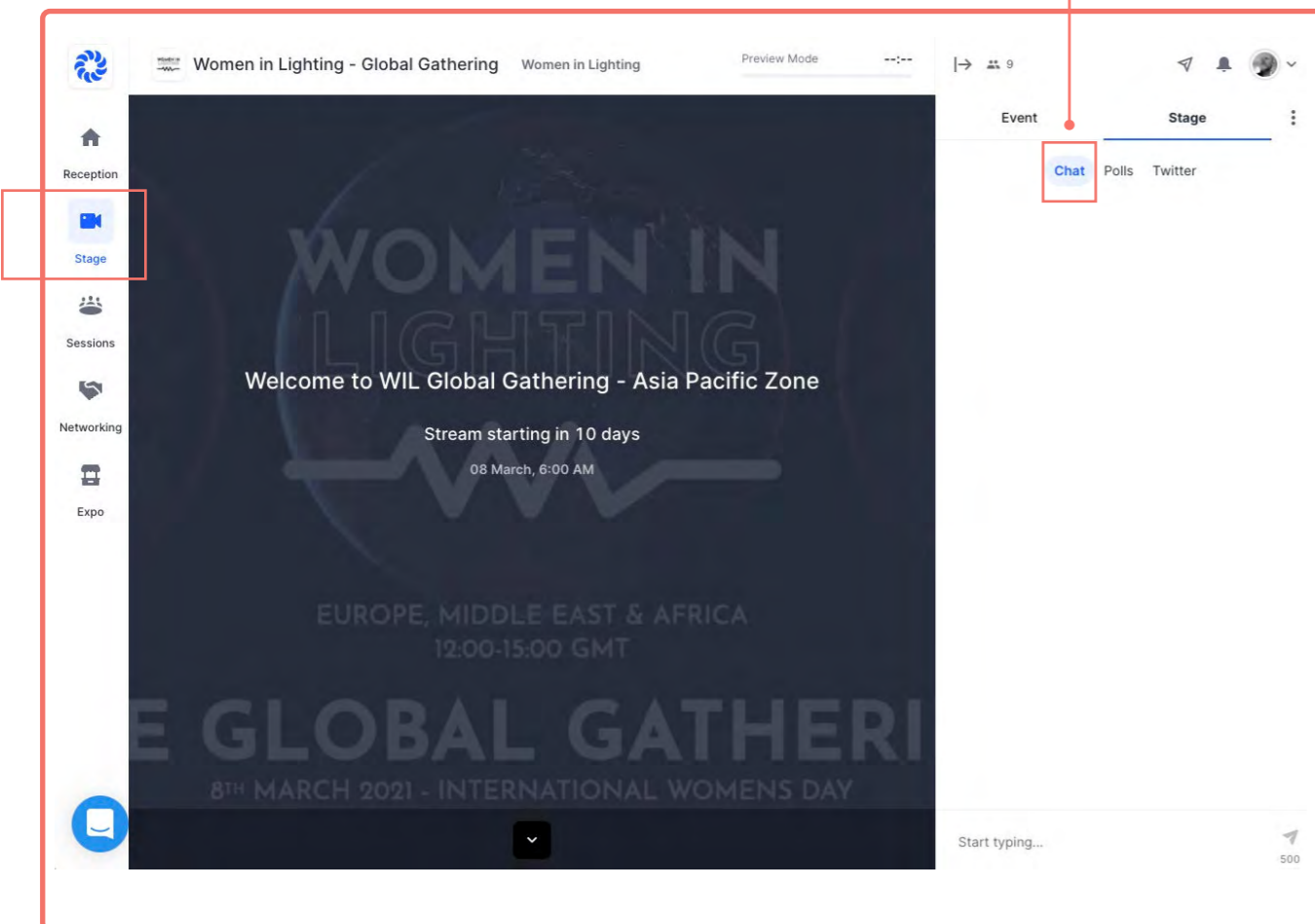


# DURING THE EVENT

## #WILGLOBALGATHERING

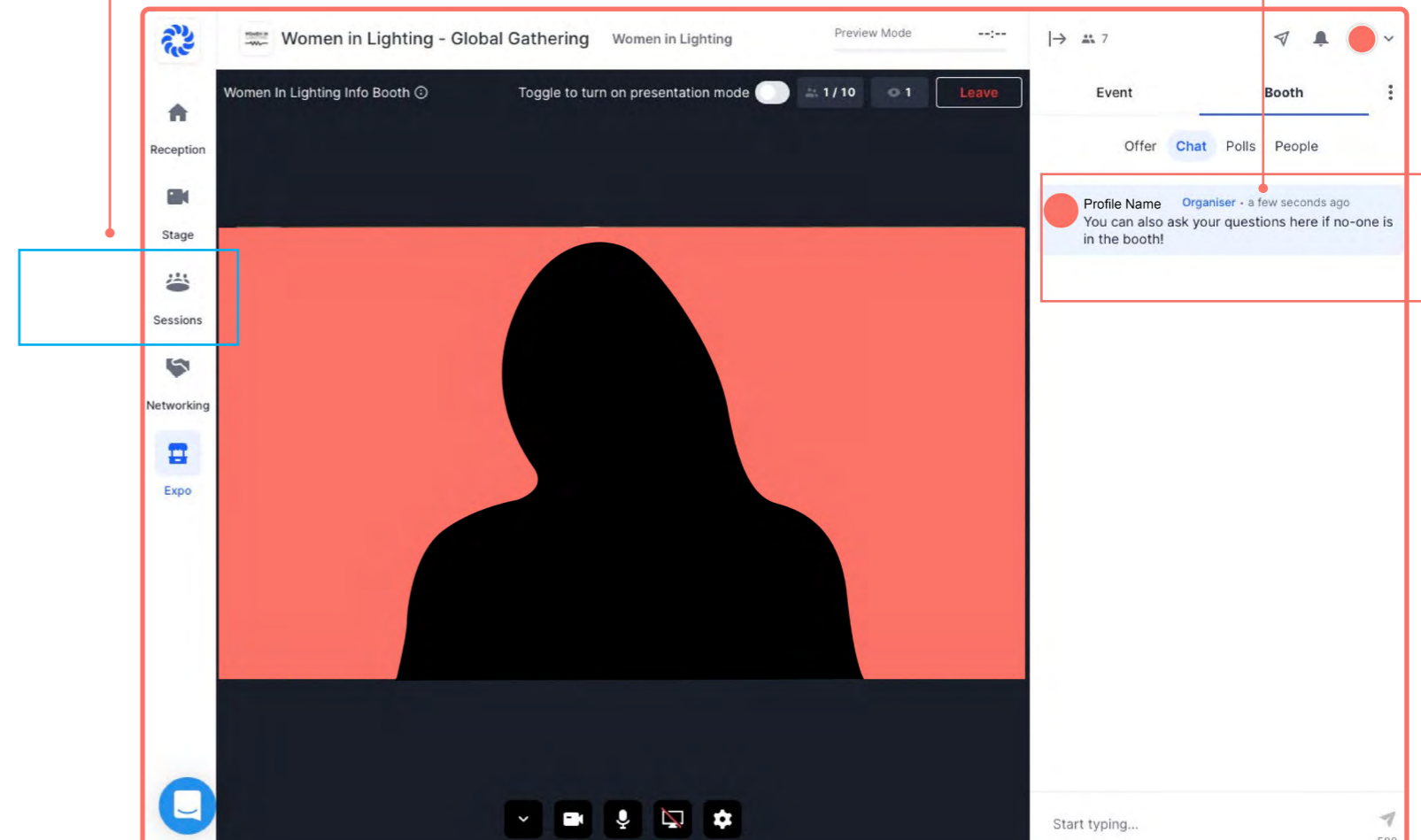
To participate in the **Introduction & Inspiration Sessions** and **Action Sessions**:

- Click on the “**Stage**” icon on the LEFT side bar with icons.
- The speakers will be in the center of your screen window, presenting.
- If you have any **questions or comments**, use the Chat Window on the RIGHT.



To listen to any **Project Sessions**:

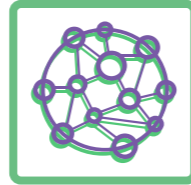
- Click on the “**Sessions**” icon on the LEFT side bar with icons.
- Select the Session you wish to attend;
- The speaker for that session will be presenting in the center of your screen window.
- If you have any **questions or comments**, use the Chat Window on the RIGHT.
- Don't forget to “**Connect**” with any of the other attendees also participating in the same session.



# NETWORKING

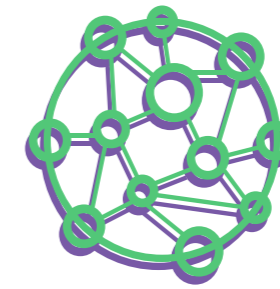
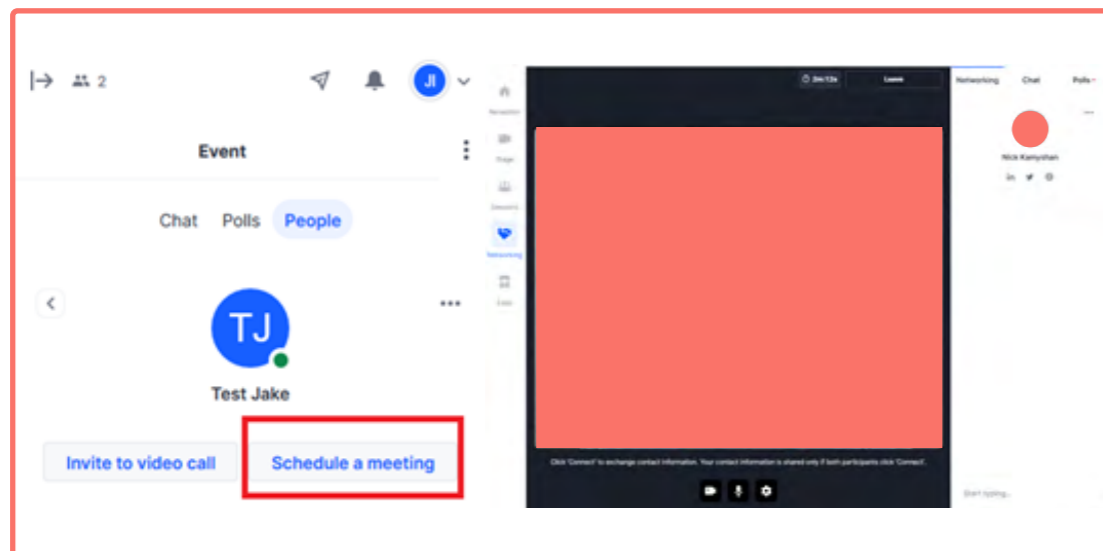
## #WILGLOBALGATHERING

### Connections



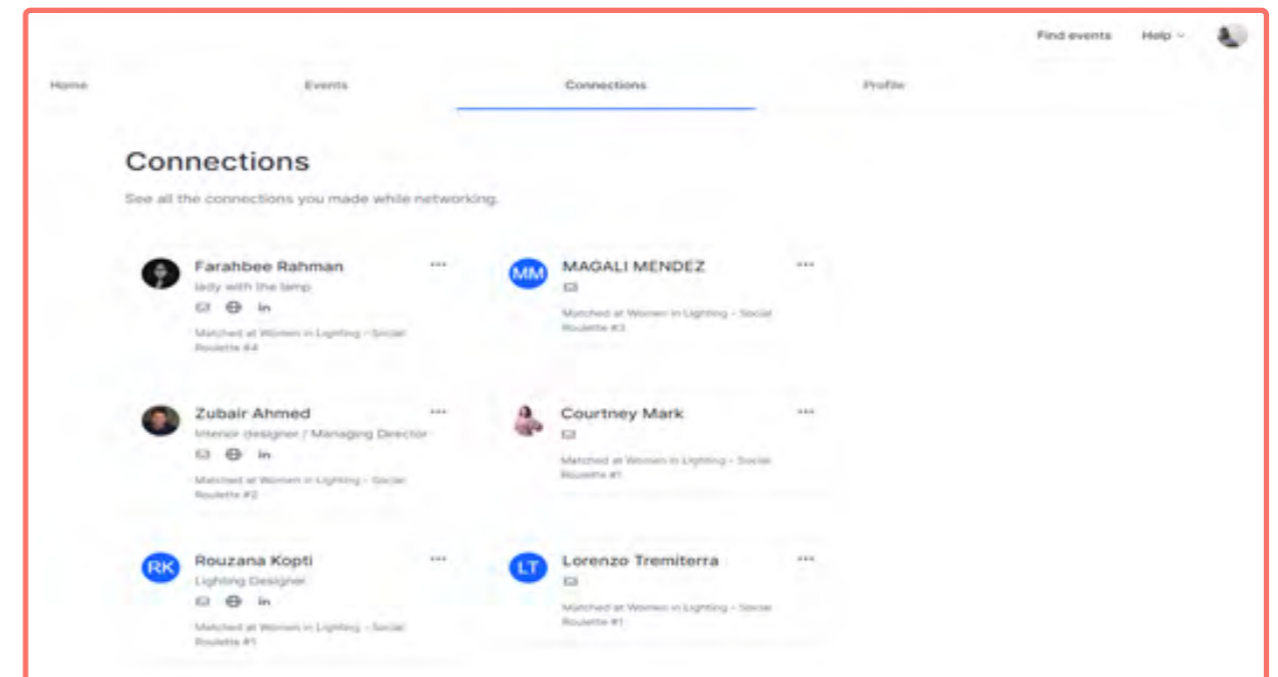
To gradually build your WIL network you can begin to form “Connections” with the other attendees.

1. Enter the “Chat” tab or “People” tab on the RIGHT;
2. Once there, you can scroll down to see all the attendees at the event;



3. Click on the attendee’s name, followed by “Connect” during the event, you will gradually build your WIL network, coordinate virtual meetings on the Hop-In Platform & easily meet again at the next WIL Hop-in Event.
4. At the end of the WIL Event, you can see you all the connections you made.

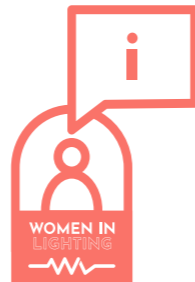
At any time throughout the event, preferably between the sessions, you may network with any other participant who is available.



# WOMAN IN LIGHTING INFO BOOTH

If you have any WIL based questions or want to have a quick chat with one of our ambassadors, please follow the instructions below:

1. To go into the Info Booth you need to go to the LEFT side bar and click on “Expo”, this will show an image with Women in Lighting Info Booth graphic.



Click on it to enter.

The screenshot shows the Hopin event interface. On the left sidebar, the 'Expo' icon is circled in red. The main area displays a banner for 'GLOBAL GATHERING FOR INTERNATIONAL WOMEN'S DAY 8TH MARCH 2021' with a 'Women In Lighting Info Booth' button. Below the banner, two numbered instructions are provided:

2. Click “Share Audio and Video”. Make sure you’ve given browser permissions for Hopin to use your camera and mic. As with all areas of hopin it works best on Chrome.
3. The moderator in the booth will click on your PROFILE to let you in to the space and once you select your camera and audio devices you will be on camera shortly and able to chat with the host live.

## The InfoBooth will be ‘womanned’ by;

### Part 1.

**AMBASSADOR IN AUSTRALIA**

ILZE KUNDZINA  
DESIGNER

I have been grateful to be inspired and encouraged by so many fantastic women throughout my life and career and I believe that this project is a great platform for continuing to support the creative potential amongst women in lighting.

LIGHT IN NATIVE LANGUAGE: #LIGHT

**AMBASSADOR IN SINGAPORE**

YAH LI TOH  
DESIGNER

Female lighting designers are nurturers of light. I know at least 30 women working in lighting in Singapore.

LIGHT IN NATIVE LANGUAGE: #CAHAYA #光 #GUANG #LIGHT

### Part 2.

**AMBASSADOR IN RUSSIA**

OLGA TU'ZOVA  
DESIGNER, ARTIST, BLOGGER, EDUCATOR, RESEARCHER

Women In Lighting gave me a new target in my life. I was born in the biggest country in the World, and I am proud of it. We have so many talented young women who want to achieve more. In my opinion this project will open doors for new generations. It will allow us to meet other women all over the world, to find new friends, to knock down the walls in our minds, to find opportunities and follow a gorgeous way! Gorgeous way of light!

### Part 3.

**AMBASSADOR IN MEXICO**

MAGALI MENDEZ  
DESIGNER, EDUCATOR

La Luz, La Sombra, La Arquitectura, La Mujer Por algo esas palabras son de genero femenino... The Light, The Shadow, The Architecture, The Woman. There must be a reason why all those words are female gender...

LIGHT IN NATIVE LANGUAGE: #LUZ

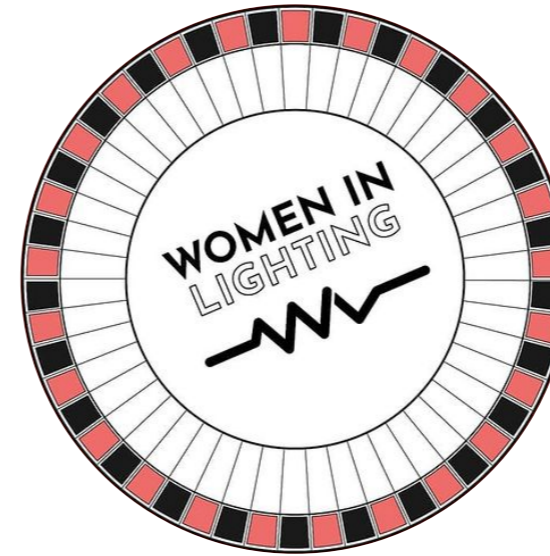
**AMBASSADOR IN BRAZIL**

PAULA CARNELOS  
DESIGNER

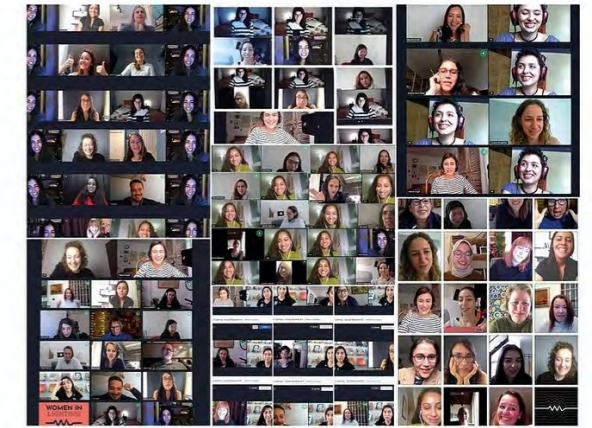
Every day I realise the importance and relevance of this project. Every day I understand some issues related to this topic that I had not realised before. I'm sure this is the beginning of a beautiful exchange and discussion that will help to elevate the lighting community to another level.

LIGHT IN NATIVE LANGUAGE: #LUZ #LUMIÈRE

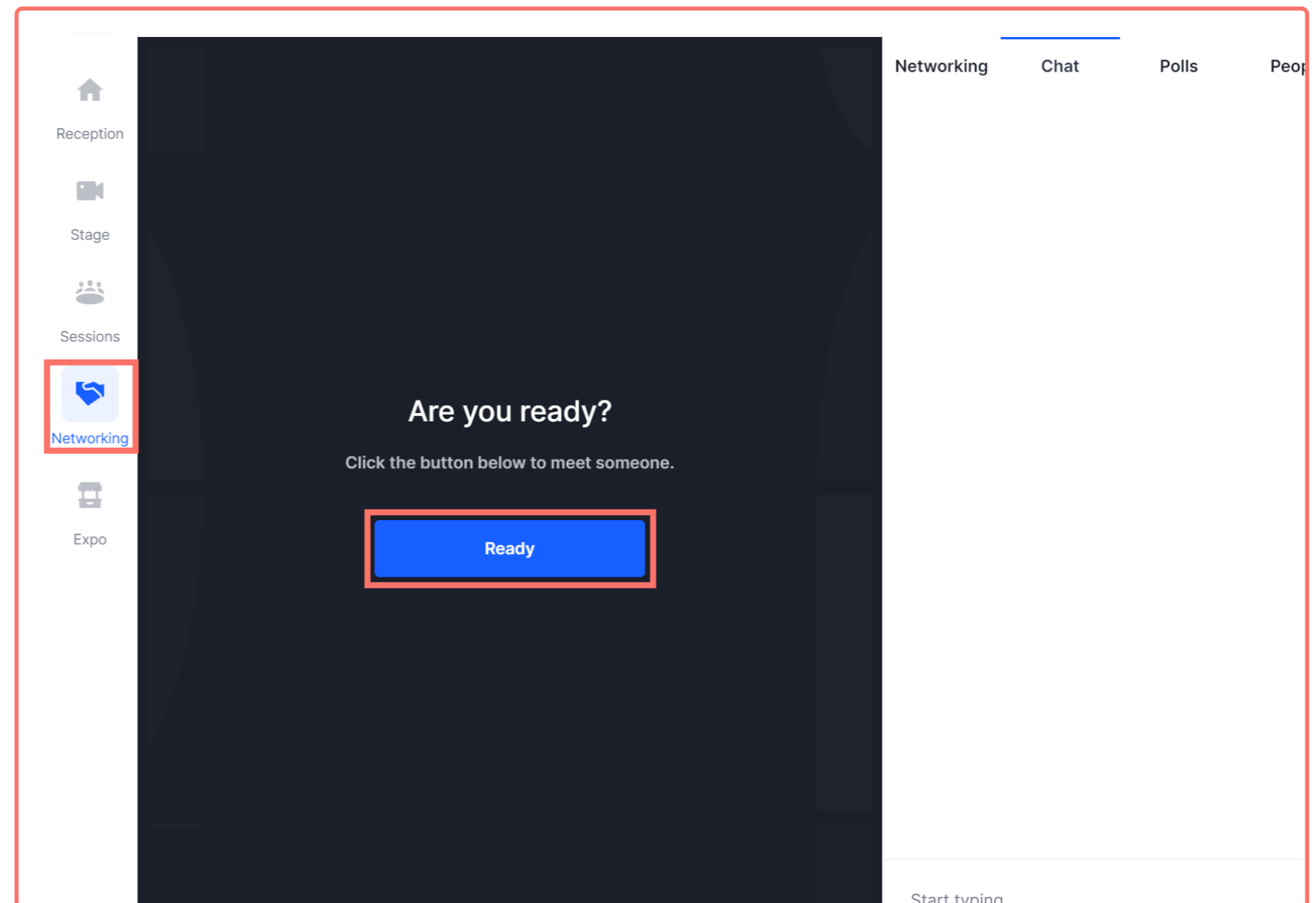
# WOMAN IN LIGHTING SOCIAL ROULETTE



#wilsocialroulette



1. At the start of the Social Roulette, select the “Networking” icon on the LEFT side bar.
2. As soon as you click the “Ready” button, the system searches for someone else who has also clicked the Ready button.
3. You will be randomly matched instantly and the video chat begins and lasts for 3 minutes.
4. There is a timer countdown on the top side of the screen. When the time expires, the meeting ends.
5. If you are really enjoying your chat, be sure to request to “Extend” the session (by an additional few minutes) – please note both attendees must agree to “Extend”
6. Don’t forget to **take screen shots / photos** of each of your meetings on the Social Roulette for posting and sharing on social media, and impress the community with how many attendees you met from all over the world in 60 minutes, without even leaving the room!





# WOMAN IN LIGHTING

## CALL TO ACTION

The WIL community are veterans of the social media challenge and our online event for International Women's Day is a great time to create a new one.

We have chosen not to use the official hashtag from this year's International Women's Day and instead use the name of our event: WIL Global Gathering. This is because we want to highlight the diversity and wide range of women and men from around the world who are part of the WIL network and will come together on that day.

**Included in the digital package we send here**, is a sign to hold up and photograph with the challenge hashtag.

If you don't have access to a printer feel free to create your own hand-made version with the hashtag on it.

#WILGlobalGathering

Join us to celebrate our collectiveness and international community.



A4 format sign included in this pack for printing.



# EVENT CO-SPONSORS

# #WILGLOBALGATHERING



LIGHT  
COLLECTIVE

formalighting

ARCHI  
*fos*

# CASAMBI

Casambi is changing the way people and businesses light their surroundings. Since 2011, the Finland-based company has established itself as the leading producer of wireless lighting control systems, using technology based on Bluetooth Low Energy.

A dynamic user experience, excellent reliability and unparalleled performance are already enjoyed by thousands of end users.

Casambi's technology can be integrated into anything from individual lighting fixture controls to industrial-scale solutions with the cloud-based remote control, monitoring and data logging.



What if you could start with an app, and build whatever lighting infrastructure you wanted, with robust connectivity, no control wiring and limitless opportunity for expansion and upgrades?

With Casambi Bluetooth mesh, you can. This best-in-class wireless mesh network platform offers superior design, operation and adjustability from smartphones, tablets, smart watches, pushbuttons, switches or RF controls.



CASAMBI  
info.us@casambi.com

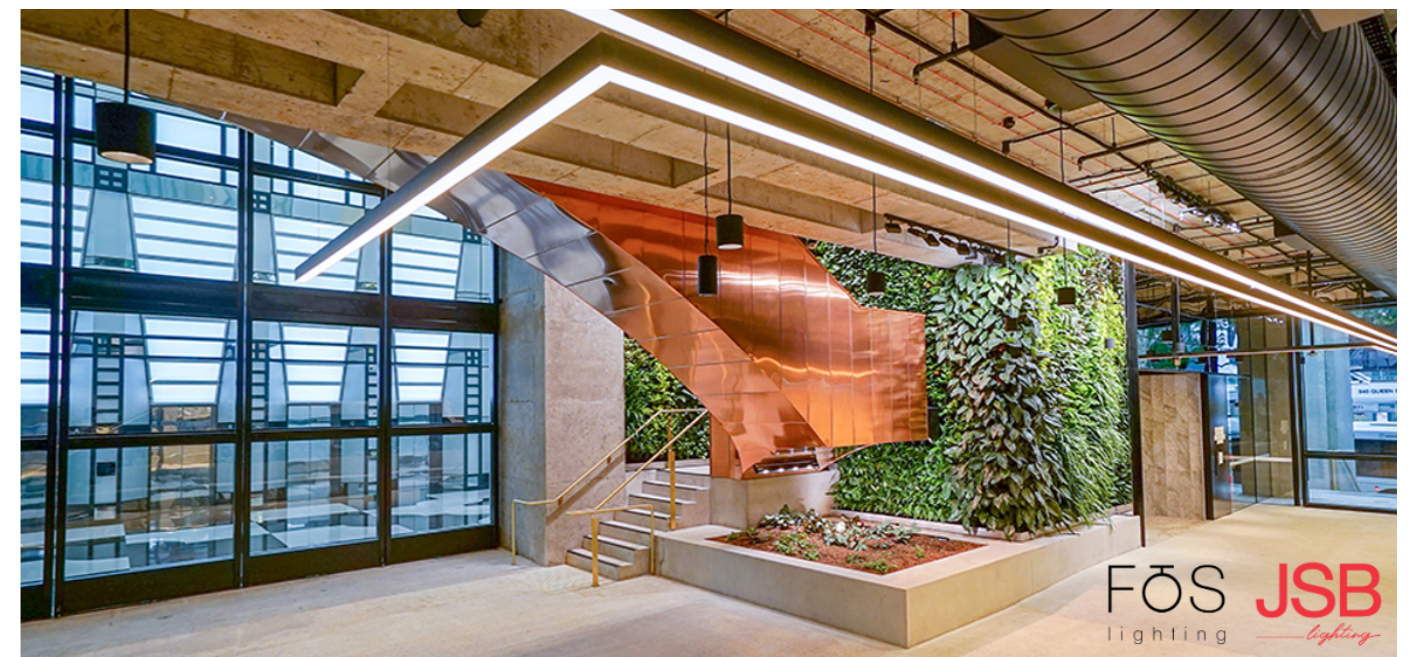


FÖS  
lighting

JSB  
lighting



*'FOS Lighting is a solution driven innovative lighting and controls business using in-house design experience and engineering coupled with manufacturing facilities in Australia. Working closely with key account customers, its project lighting solutions business is based on innovative lighting concepts, using leading edge technology to generate new levels of impact in both design and function.'*





With over twenty years of experience, Huda Lighting has positioned itself as a leading lighting solution provider for the Middle East and North African markets, providing a high degree of lighting expertise to support the region's projects with the most suitable products and services for any type of project in the hospitality, retail, commercial, residential or industrial market segment.

With the region's developing markets, Huda Lighting was able to expand its support covering more countries with an experienced team of over 240 employees across its 11 branches.



**WE ARE PLEASED TO EXTEND  
OUR SUPPORT TO INITIATIVES  
OF DIVERSITY SUCH AS THE  
GROWING COMMUNITY OF  
WOMEN IN LIGHTING  
GLOBAL GATHERING EVENT**

[hudalighting.com](http://hudalighting.com)

Dubai Abu Dhabi Riyadh Jeddah Doha Amman Beirut Cairo Kuwait Manama Muscat

# ALPHABET BRUCK

LEDRA brands

LEDRA brands is an American manufacturer of innovative lighting products offered under the brands ALPHABET Lighting and BRUCK Lighting.

ALPHABET offers a comprehensive line of specification commercial downlights, cylinders, linear profiles and handrail pucks. BRUCK offers 9 track systems as well as many “techorative” products for applications to include office, retail, hospitality, education, healthcare and residential lighting.

Both brands feature the latest in intelligent integrated controls and compatibility, human centric, dynamic color with precision optics.

BRUCK presents MOLTO LUCE, FORMALIGHTING and WEPlights as collections for the North American market.

ALPHABET

HYPERBOLIC

PINHOLE

EXTREME REGRESS

## QUIET PLEASE...

A quiet ceiling can completely change the mood in a space. ALPHABET NU Series Downlights have hundreds of combinations of glare control trims and cutting edge technology to “keep it quiet” while comfortably illuminating the space.

- Hyperbolic
- Extreme Regress - 52° CO
- Honeycomb Louver
- Pinhole
- invisTRIM
- Trimless Millwork

LEDRA brands

ALPHABET LIGHTING | 714.259.9959 | [www.AlphabetLighting.com](http://www.AlphabetLighting.com)

# formalighting

formalighting is a multi award winning, leading manufacturer of architectural lighting fixtures, and a proud IALD LIRC member.

As a family run business, formalighting has over fifty years experience, and two generations invested in delivering high quality, Italian designed, innovative lighting solutions via its cross continental operations and distribution network.

With headquarters in Hong Kong, Milan, Shanghai and New York, additional presence via its strategic partnerships, and a distribution network that spans over 40 countries, formalighting has you covered wherever you are in the world.

formalighting's mission quite simply is to continuously serve the international lighting community with a globalized, premium service for the supply of high performance, technologically advanced luminaires, with an additional commitment towards sustainability and plastic-free packaging

# The Future of Light is moving

## HAPPY ANNIVERSARY

WOMEN IN  
LIGHTING



## THE WIL PROJECT TURNS 2!

It is our great honour and privilege to sponsor the inspirational WIL Project and this  
#WILGLOBALGATHERING

formalighting is delighted to be part of this wonderful celebration  
of achievements, inclusivity and solidarity.

To everyone who has contributed, served, engaged, and supported the  
WIL project for another year...

## CONGRATULATIONS!!!!



# EVENT PROGRAM

## #WILGLOBALGATHERING



### PART I: INDIA, ASIA, AUSTRALIA ETC

6-9 AM GMT // CONVERT TIME 

06:00 GMT 



SHARON & MARTIN / LIGHT COLLECTIVE

INTRODUCTION

06:15 GMT 



LIGHT BASED IMMERSIVE EXPERIENCES

DOROTHY DI STEFANO / IMMERSIVE DIGITAL EXPERIENCE SPECIALIST

INSPIRATION

Global thought leader, speaker, creative strategist, founder and director of Molten Immersive Art, Dorothy Di Stefano leads a collective of experiential artists who create large-scale, site-specific, digital immersive experiences. As an ambassador for the arts, Dorothy sits on many cultural committees and is a Founding Circle Member of the World Experience Organization (UK) a Visual Arts Committee Member of the Della Leaders Club (NYC Chapter) and the International Partner, Representing Australia for the World Business Angels Investment Forum (Istanbul).

She is the only Australian representative on the 'Experiential Design' judging panel for the prestigious ADC 99th Annual Awards in New York and was awarded LinkedIn's Top Voice for 2019. Dorothy has a worldwide following on this platform which she uses to highlight the importance and impact of art on our world and to showcase global artists to a business-focused community.

07:00 GMT 



TURN THE BIG LIGHT OFF

FAY GREENHALGH / GLOWING STRUCTURES

PROJECT

After renovating numerous private properties, Fay was trained at Michael Popper Associates, a multi-disciplinary Mechanical and Electrical consultants and gained experience from the basics of emergency lighting to producing bespoke fittings for award winning projects. Fay worked as Senior Designer at John Cullen Lighting in London specialising in high end residential lighting design as well giving lectures on lighting and effects to architects, interior designers, landscape designers and the general public. Fay has written articles for various magazines including House & Gardens, House Beautiful and Build It. Fay appeared on Karen Le Blancs show The Design Tourist (USA) to discuss energy efficient lighting. Fays ultimate passion is for architectural history which has led to lighting buildings such as The Jerusalem Chamber at Westminster Abbey, and The Forum Theatre Melbourne Australia. Sharing knowledge of lighting effects and the impact that lighting can have on architecture and people is a favoured subject.

FAÇADE AND BESPOKE LIGHTING

NELSON NG / ISOMETRIX

PROJECT



With over 23 years experience in lighting design industry, Nelson has always been passionate about architectural and interior designs with focus on light and space. Nelson is the Design Director of Isometrix Lighting + Design (Hong Kong) and he has worked on large-scale, internationally recognized projects across Asia Pacific regions. A diverse range of his projects cover hotels & resorts, casino, commercial buildings, shopping centres, retail outlets and private residences. Nelson likes to oversee projects from the initial concept and brainstorming stage, with his strong supporting teams in studio, right through to the final implementation and focusing of the projects.

MAKING LIGHT WORK

SAKINA DUGAWALLA / LIGHT.FUNIC

PROJECT



Sakina is an experienced lighting design professional educated in the field of interior design. She runs her own award-winning lighting design practice, Light.Func. Established in 2016, and with a presence in UAE & Tanzania, the studio is known for its creativity, versatility and collaborative approach.

Beyond steering Light.Func, she focuses plenty of her energy and motivation on education, with initiatives such as Light.ication and mentoring students in the region. Sakina is also invested in having a rhetoric and all-inclusive lighting community in the UAE, dedicating time to have an open rapport and find opportunities for collaboration. Sakina is the Women in Lighting Ambassador for the UAE

Her past 7 years' experience working for Europe's most renowned architectural lighting manufacturers, assisting the setup of Middle Eastern branches, was instrumental in bringing forth her exhibit of creativity, character-strength, rapid-paced learning, exponential progress and results - both in commercial & creative environments.

07:20 GMT 

BREAK

07:30 GMT 



NEW ZEALAND'S AIM TO BE A DARK SKY NATION

KYRA XAVIA / DARK SKY RESEARCHER

ACTION

Kyra Xavia is a researcher, writer, and dark skies advocate based in New Zealand. She helps educate decision-makers and the public about the importance of responsible lighting, nocturnal placemaking and the value of darkness. She's a member of ILLUME, an interdisciplinary research group at the EcoTech Center part of Gdansk University of Technology (GUT), Poland, a delegate for the International Dark Skies Association (IDA), a dark skies ambassador for the International Astronomical Union (IAU), and leader of the Dunedin Dark Skies Group. Recognised in New Zealand and abroad for her advocacy, Kyra has co-authored research papers and published articles specific to the impact of artificial lighting on humans, flora and fauna.

08:00 GMT 

SOCIAL

09:00 GMT 

END OF PART I





# EVENT PROGRAM

## #WILGLOBALGATHERING



### PART 2: EUROPE, ME, AFRICA ETC

12-3PM GMT // CONVERT TIME

12:00 GMT



SHARON & MARTIN / LIGHT COLLECTIVE

INTRODUCTION

12:15 GMT



PURPOSE PANDEMIC PONG PUNK PINK  
JORG SEEMAN & MICHELA BONZI / LUCESPAZIO

INSPIRATION

**Michela Bonzi** is an independent architectural lighting designer with a background in architecture and daily passion for lighting. Over 15 years of experience in lighting design projects convey into a "from a pin to an elephant" approach & dealing with hospitality & residential, retail, art and outdoor lighting projects.

*"It all began with two main elements of my childhood: the passion for photography and the connection to a natural environment. Both dealing with light & shadows, the changing of colors, daylight effects, atmospheres & emotions. Lighting has pretty much everything to do with creating the right sort of atmosphere."*

*Light is emotion & a building material for our practise."*

**Jörg Frank Seemann** is an independent architectural lighting designer with two decades professional experience in applying lighting to culture, nature, art and design.

Frank's passion for light and understanding of its power began in the theatre as a result of writing, directing and designing his own plays and performances. Driven by storytelling as the basis for how design decisions are made, the applications soon broadened from lighting theatre, dance, opera & concerts to exterior spaces and events including temporary architectural and urban installations. The desire to work in more permanent, wider accessible venues, not to speak of his love of daylight, had him stumble upon and plow in the field of architectural lighting - where from kindergartens to urban masterplans, art projects to high end retail and hospitality he keeps learning and pushing the still moving frontiers of the human visual perception.

13:00 GMT



LIVE LIGHT  
MASSIMILIANO BALDIERI / BALDIERI LIGHTING DESIGN

PROJECT

Baldieri Lighting Design started its business in 1968. The early-stage lighting design is offered as a support to the designer to help the sale, the design component increasingly integrates with the commercial one. The experience gained over the years and the variety of assignments leads the company on top of lighting market, and change to a lighting design company, Massimiliano also received international recognition for his projects, IES Awards of Merit 2012, 2014, 2017, 2018. Professor from 2012 to 2014 at IED in Rome, and from 2010 to 2014 at Università La Sapienza in Roma in Lighting Design at the Exhibit Master.

He was working from 2014 to 2017 in New York, now back in Italy he is working at several projects, residential and hospitality, due to the opportunity to live and work in Rome he is working for ancient heritage landmark.

13:20 GMT



LIGHT FOR EDUCATION: IN LOCK DOWN AND POST LOCK DOWN ERA  
CHERINE SAROUFIM / IDEPCONSULT

PROJECT

Saroufim graduated from the Académie Libanaise des Beaux Arts, Lebanon in 2004 with a Master in Interior Architecture. In 2007, she obtained an MFA in Lighting Design from Parsons The New School, New York. Her Thesis: Moucharabieh(2) received the IESNA Thesis Prize. This project was presented during the first PLDA Conference in London in 2008.

In the November-December 2014 issue of Architectural Lighting Design magazine, Saroufim was named one of the "Next Lighting Generation" to keep on the watch list. Saroufim was awarded the IESNA Award of Merit for the LAU University, Wadad Said Khoury Student Center and for the Mar Elias Chruch Kantari. In 2019, Saroufim was a guest speaker during the Light Middle East.

Saroufim is the Lebanese Ambassador for "Women in Lighting".

In 2007, Saroufim opened the Lighting Design department within IDEPCONSULT, Mounir Saroufim and Partner. Since then, she has been teaching at an academic level Lighting Design at ALBA.

13:30 GMT



LIGHTING DESIGN FOR THE CIRCULAR ECONOMY  
EMILIO HERNANDEZ AND ANNA SANDGREN / GREEN LIGHT ALLIANCE

ACTION

**Emilio Hernandez**

Emilio originally worked in natural daylight design but now works predominantly in artificial lighting design. He has worked on a diverse set of projects with experience in residential, mixed use commercial, hospitality, schools and urban regeneration projects.

After 15 years in lighting design in London (just as he was starting to get the hang of it) Emilio recently moved to Sweden and co-founded 'Ström' (with his partner Anna Sandgren). This move has provided the independence to form partnerships to help develop & promote the sustainable lighting design values needed as we head to a net zero carbon future.

As an active member of the lighting community Emilio has spoken at design conferences and provided CPD's and is one of several founding members of the Green-Light Alliance and current sitting chair.

**Anna Sandgren**

Anna originally comes from an Interior Design background having graduated from University of the Arts London with a degree in Interior and Spatial Design. In 2011 Anna completed her MSc in Light and Lighting at the Bartlett, UCL. She joined the then newly founded Nulty where she spent 9 years progressing to Associate Designer leading a wide range of award winning projects and gaining experience working in the Middle East, Asia and American markets.

After 16 years living in the UK Anna moved back to Sweden at the end of 2020 where she co-founded Ström with her partner Emilio Hernandez.

Anna is also a founding member of the new initiative Green Light Alliance (GLA) which is a passion project run by like minded designers and manufacturers in the lighting industry with an aim to promote circular design.

14:00 GMT



SOCIAL

15:00 GMT



END OF PART 2



# EVENT PROGRAM

## #WILGLOBALGATHERING



### PART3: USA & LATAM 4-7PM GMT // CONVERT TIME

16:00 GMT



**SHARON & MARTIN / LIGHT COLLECTIVE**

**INTRODUCTION**

16:15 GMT



**ARE YOU READY TO EXPOSE YOURSELF?  
ANNE MILITELLO / VORTEX LIGHTING**

**INSPIRATION**

Anne Militello is the Founder of Vortex Lighting in Los Angeles and Head of Lighting Programs at the California Institute of the Arts. Ms. Militello is a renown theater and architectural lighting designer as well as an educator and fine artist with a career spanning all aspects of creating with light. Her career began in theater and music clubs in New York City and eventually to Broadway, international opera, and touring concert stages. She was a Show Lighting Designer at Walt Disney Imagineering and Universal Studios before starting her own company which focuses on architectural projects.

She received the OBIE Award for Sustained Excellence, the Paul Waterbury Award of Distinction from the IESNA, an IALD Award of Merit and Themed Lighting Designer of the Year from Lighting Dimensions International among others.

She has been featured in the New York Times, New York Magazine, Newsweek, Time Magazine among others and was the subject of the BBC Documentary.

17:00 GMT



**LIGHT AND ESSENCE  
ALEJANDRA HERNANDEZ / AH CONSULTING**

**PROJECT**

The experience of working for some of the world's leader companies in Lighting Design and Lighting Controls gave me the impulse and inspiration to start my own Design Firm.

As a Designer I have explored some of the most exciting landmarks of the profession, from Interior Design in México, Historical Building Restoration in Italy to Lighting Design World Wide.

10 years ago I specialized in Lighting Design as profession and passion. I've worked hand in hand with some of the most important Architectural Firms, Interior Designers and Property Managers to develop projects from Conceptual Design to Construction Administration.

As a Creative Director in AH Consulting I have designed and developed more than 500,000 m2 in residential and commercial projects. Including Coporate offices,high-end retail and Airports.

I strongly believe aesthetics, sustainability and wellness are key concepts to be included in all our successful projects, which is why I got accredited as a LEED GA with the USGBC (US Green Building Council one of the top notch sustainability certifications worldwide) and I'm getting involved with WELL AP Accreditation.

One year ago I founded and ONG, Light without Borders Mexico and LATAM, as branch of "Concepteurs Lumiere Sans Frontiers" to work as a team address Social Design and projects following and integrative and inclusive methodology for people who can't access this kind of resources.

### PART 2: EUROPE, ME, AFRICA ETC

12-3PM GMT // CONVERT TIME



**CASAMBI WORKSHOP  
PETER AUGUSTA / CASAMBI**

**PROJECT**

The leader in modern wireless lighting control solutions based on Bluetooth Low Energy, Casambi Technology, will showcase control projects around the world that highlight the simplicity, power and connectivity of our platform to help Lighting Designers better understand smart lighting controls.



**ENGAGING OUR COMMUNITIES AS CITIZEN LIGHTING DESIGNERS  
LAUREN DANDRIDGE GAINES / PERFORMANCE LIGHTING SYSTEMS**

**PROJECT**

Lauren is an all-around lighting enthusiast who is Lighting Certified, a current member of the Illuminating Engineering Society of North America (IES), an allied professional in the National Organization of Minority Architects (NOMA), and board member of the Los Angeles Forum for Architecture and Design. She is a specification agent for Performance Lighting Systems and an adjunct Associate Professor in the School of Architecture at USC. She regularly provides lighting design lectures and informational sessions at local design firms. She is firm believer in honoring the integrity of design and working with all parties to achieve buildable and beautiful solutions. At USC, she guides mildly interested students into genuine curiosity about lighting and its abilities. Her studio focuses on basic lighting design techniques as well as exposure to research and theory behind current trends. Students design multiple projects, present every week, build models and run their own lighting calculation studies.

17:20 GMT

**BREAK**

17:30 GMT



**LIGHTING DESIGN UNDER AN AWARENESS OF A NEW COLLECTIVE AND COLLABORATIVE WORLD  
MONICA LUZ LOBO / LD STUDIO & PASCAL CHAUTARD / LIMARI LIGHTING DESIGN**

**ACTION**

**Monica Luz Lobo**

Architect and lighting designer, Monica has founded and is currently the creative director of LD Studio, a lighting design Studio based at Rio de Janeiro, Brazil.

Her work features in many local and international publications, and she has won a number of awards at home and abroad.

Being committed to the development and dissemination of the profession, she is co-founder of AsBAI - Brazilian lighting association, member of the international committee of EILD - Encuentro Iberoamericano of Lighting Designers, a professional member and part of the board of IALD - International Association of lighting Designers and a CLD - Certified Lighting Designer since 2017.

On 2020 she has been nominated and elected to be the next president of the IALD.

**Pascal Chautard**

Self-taught lighting designer with 30 years of experience, Pascal began his approach towards lighting design in Paris theatres. He formed his independent lighting design studio in 1993 and move to Chile in 1996.

Founding member and former president of DIA (professional association of Chilean lighting designers)

Professor of the graduate workshop on architectural lighting at the Pontifical Catholic

University's School of Design in Chile between 2011 and 2018.

Creator and organizer of EILD (encounter of Ibero-American lighting design) 2010, Valparaiso, Chile

Participated in the steering Committees of EILD 2012 Querétaro, Mexico. EILD 2014 Medellin, Colombia EILD 2016, Ouro Preto, Brasil and EILD 2019 Colonia ,Uruguay.

His studio team Limari was recognized with several lighting design awards during last years.

18:00 GMT

**SOCIAL**

19:00 GMT

**END OF GATHERING**

**THANK YOU!**

**#WILGLOBALGATHERING**

**Thank you for registering to the  
#WILGLOBALGATHERING**

**Your participation and engagement is invaluable  
to the movement.**

**The #WILGLOBALGATHERING could not have  
been possible without our generous speakers,  
who agreed to share their expertise and insights  
with the WIL community. We are truly grateful  
for their time and inspiration.**

**DOROTHY DI STEFANO  
JORG SEEMANN  
MICHELA BONZI  
ANNE MILITELLO  
FAY GREENHALGH  
NELSON NG  
SAKINA DUGAWALLA  
KYRA XAVIA  
MASSIMILIANO BALDIERI  
CHERINE SAROUFIM  
MARTINA ALAGNA  
EMILIO HERNANDEZ  
ANNA SANDGREN  
ALEJANDRA HERNANDEZ  
LAUREN DANDRIDGE GAINES  
PETER AUGUSTA**

**MONICA LUZ LOBO  
PASCAL CHAUTARD**

**We also wish to thank all the WIL Ambassadors  
for their ongoing service to the project & for  
reaching out to their local community to share  
the news about the event.**

**Thank you to these WIL Ambassadors for  
'womanning' the Info Booth:**

**ILZE KUNDZINA  
YAH LI TOH  
OLGA TUZOVA  
MAGALI MENDEZ  
PAULA CARNELOS**

**To our WIL Partners and Supporters who helped  
to promote the event - Thank you!**

**To those individuals working for manufacturers,  
distributors or reps, who supported this  
#WILGLOBALGATHERING by purchasing a  
"GREEN" Ticket...Thank you so much!**

**To formalighting's very own Pilar Cano  
Romero - thank you for all your time, skills and  
graphic / artistic contributions in putting this  
#WILGLOBALGATHERING brochure together.**

**Special thanks to the brilliant Xiao for all her  
patience and creating the evolving WIL website.**



THE GLOBAL  
WOMEN IN  
LIGHTING  
GATHERING



8TH MARCH  
2021  
INTERNATIONAL WOMENS DAY

LIGHT  
COLLECTIVE

formalighting

ARCHI  
fos